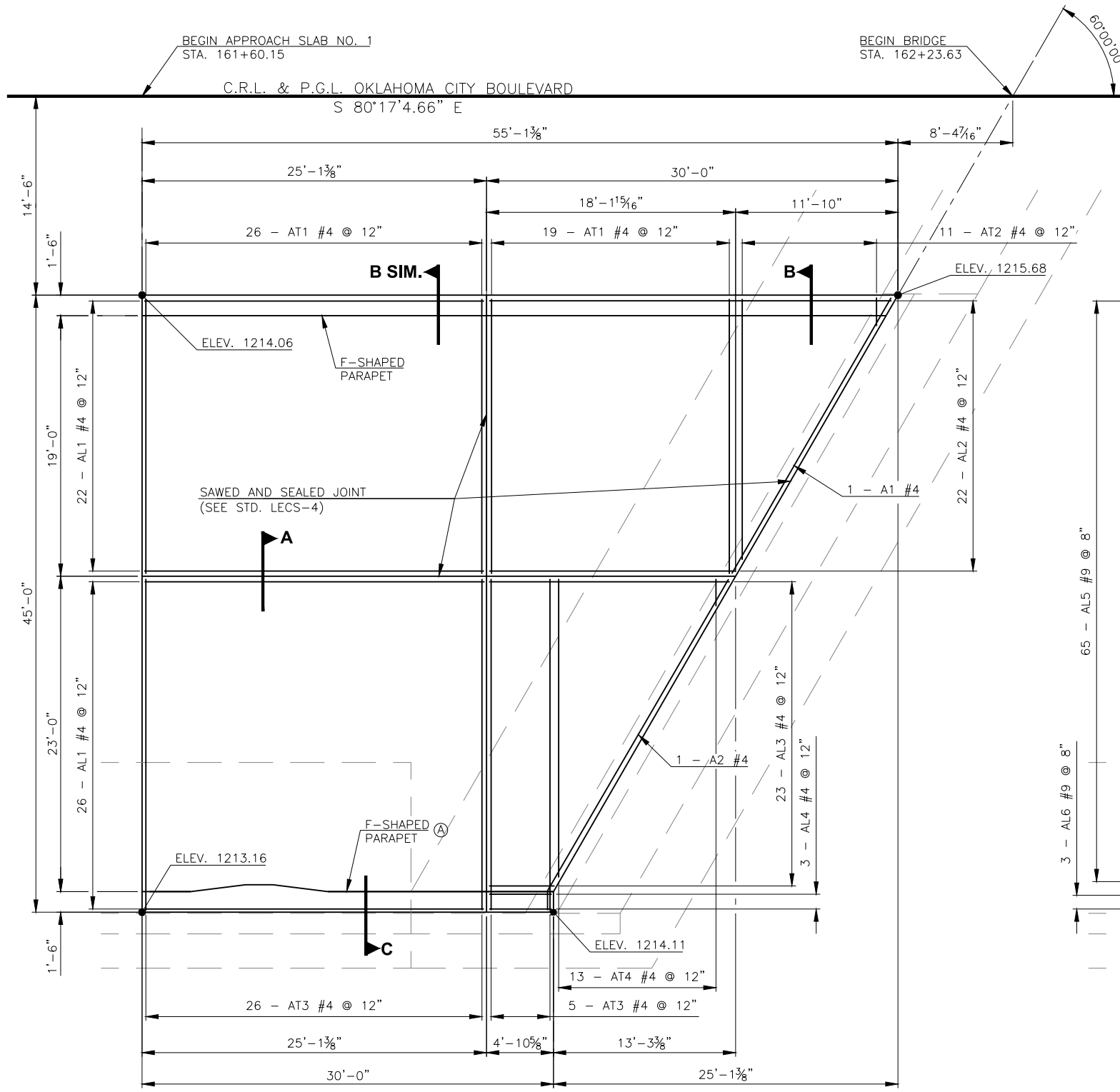
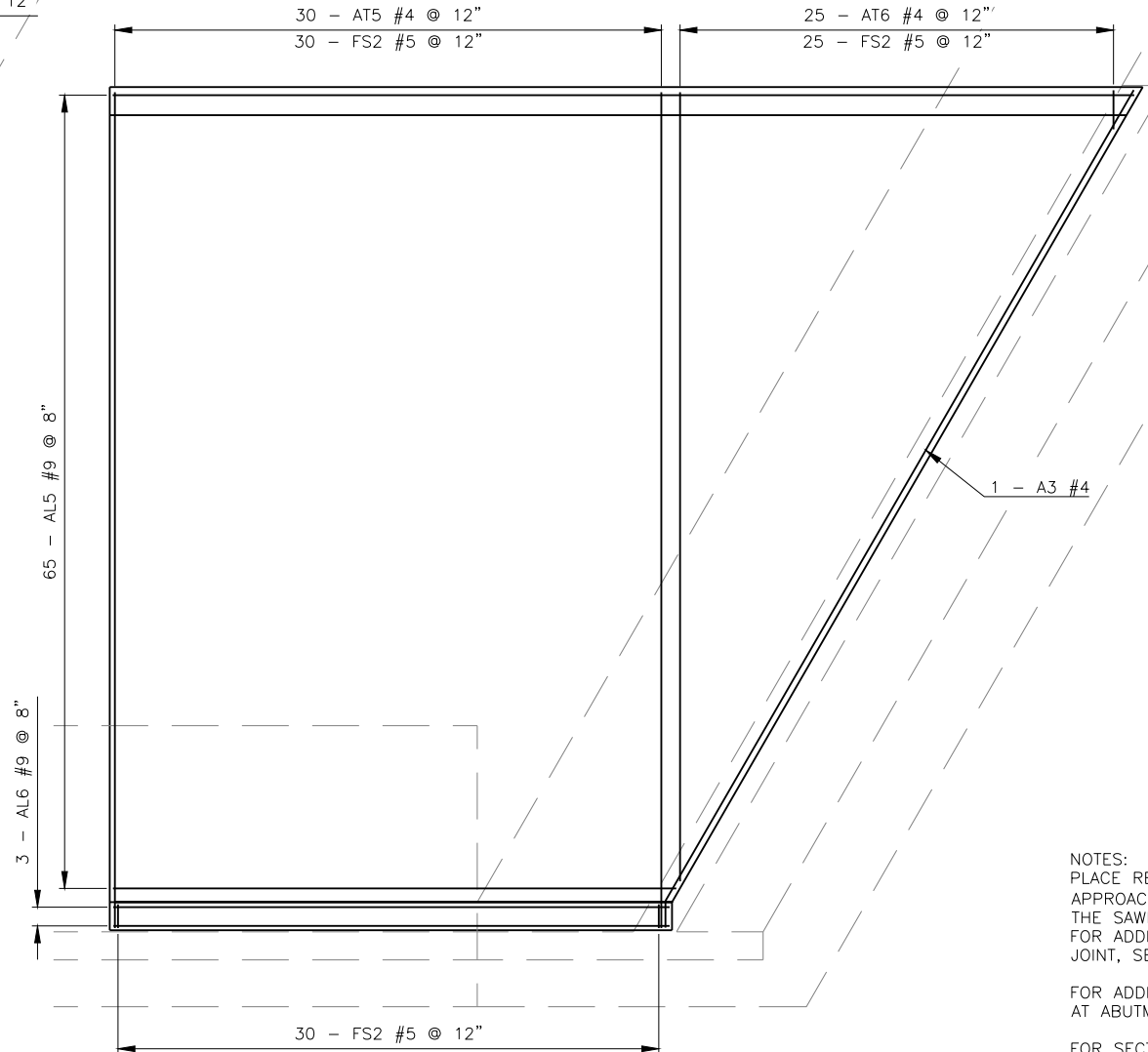


DESCRIPTION	REVISIONS	DATE



TOP MAT REINFORCING



BOT. MAT REINFORCING

NOTES:
 PLACE REINFORCING IN THE TOP OF THE APPROACH SLAB 2" FROM EITHER SIDE OF THE SAWED AND SEALED LONGITUDINAL JOINT. FOR ADDITION DETAILS OF LONGITUDINAL JOINT, SEE STD. LECS-4.
 FOR ADDITIONAL DETAIL OF APPROACH SLAB AT ABUTMENT, SEE SHEETS 94 AND 101.
 FOR SECTIONS A, B, AND C, SEE SHEET 104.

Ⓐ MODIFY THE STANDARD F-SHAPED PARAPET FOR LIGHT POLE ATTACHMENT. FOR DETAILS, SEE SHEET 104. THE COST FOR ADDITIONAL REINFORCEMENT, CONCRETE, AND CONSTRUCTION OF THE PARAPET MODIFICATION INCLUDING ALL EQUIPMENT, MATERIALS, LABOR, AND INCIDENTALS, SHALL BE INCLUDED IN THE PRICE BID FOR "42" F-SHAPED PARAPET". ALL COST ASSOCIATED WITH ATTACHING THE LIGHT POLE TO THE PARAPETS INCLUDING THE ANCHOR UNIT TO BE CAST INTO THE CONCRETE PARAPET SHALL BE INCLUDED IN OTHER ITEMS OF WORK. REFERENCE LIGHTING PLAN FOR LIGHT POLE LOCATION.

DESIGN	T.A.C.	OKLAHOMA CITY BLVD. OVER CLASSEN BLVD.	OKLAHOMA COUNTY BRIDGE A
DRAWN	R.A.P.		
CHECKED	T.A.C.		
APPROV.	T.A.C.		
SQUAD	CEC		

APPROACH SLAB NO. 1 PLAN

JOB PIECE NO. 17428(88) SHEET NO. 102